

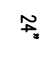

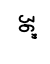


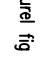

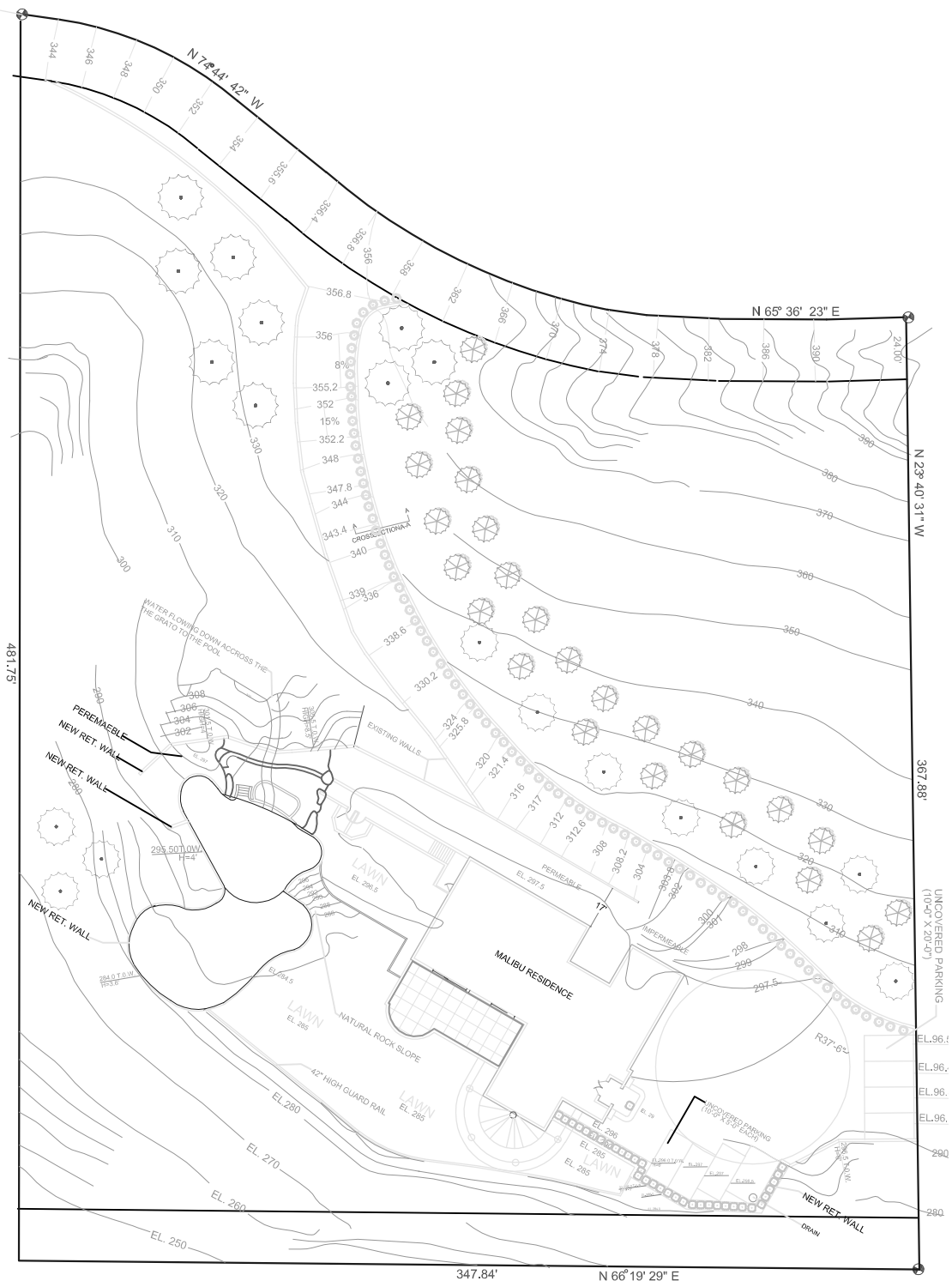


PLANT MATERIAL LEGEND			PLANT MATERIAL LEGEND			PLANT MATERIAL LEGEND						
SYMBOL	SIZE	QUANTITY	BOTANICAL/COMMON NAME	SYMBOL	SIZE	QUANTITY	BOTANICAL/COMMON NAME	GROUND COVER	SYMBOL	SIZE	QUANTITY	BOTANICAL/COMMON NAME
	36"	20	Sequoia Sempervirens \ Coast Redwoods		5 G	35	Buxus sempervirens \ Manne \ Green tower boxwood OR Myrica californica \ California wax	A		4'	18" o.c.	Helictotrichon sempervirens \ Blue Out Grass
	24"	26	Ficus microcarpa nitida \ Indian laurel fig		16	81	Ficus purtillo \ Creeping fig	B		2'	2' o.c.	Carex spissa \ Diego sedge
										2'	2' o.c.	Festuca Arundinacea \ MedallionTM
										2'	2' o.c.	Zoysia Tenifolia \ Korean Velvetgrass
										2'	2' o.c.	Myoporum parvifolium \ Creeping Myoporum



LANDSCAPING PLAN  
SCALE: 1/8" = 1'-0"